

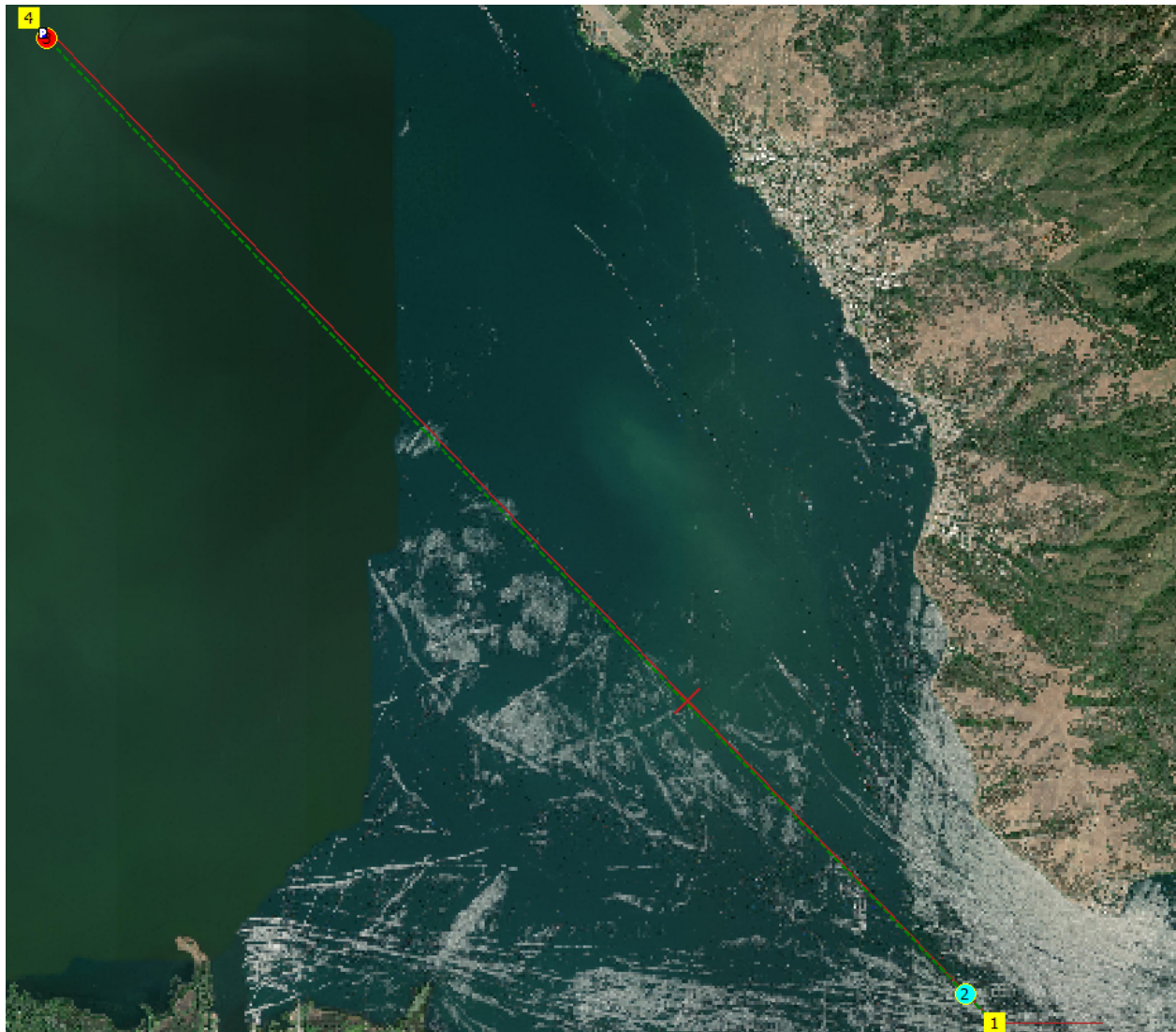
Upper Arm

Total distance for actual start to end: 13.5 km

Distance from dive to surface: 12.3 km

Start Point (first dive): 39.02776, -122.77641

End Point (end surface): 39.10734, -122.87368



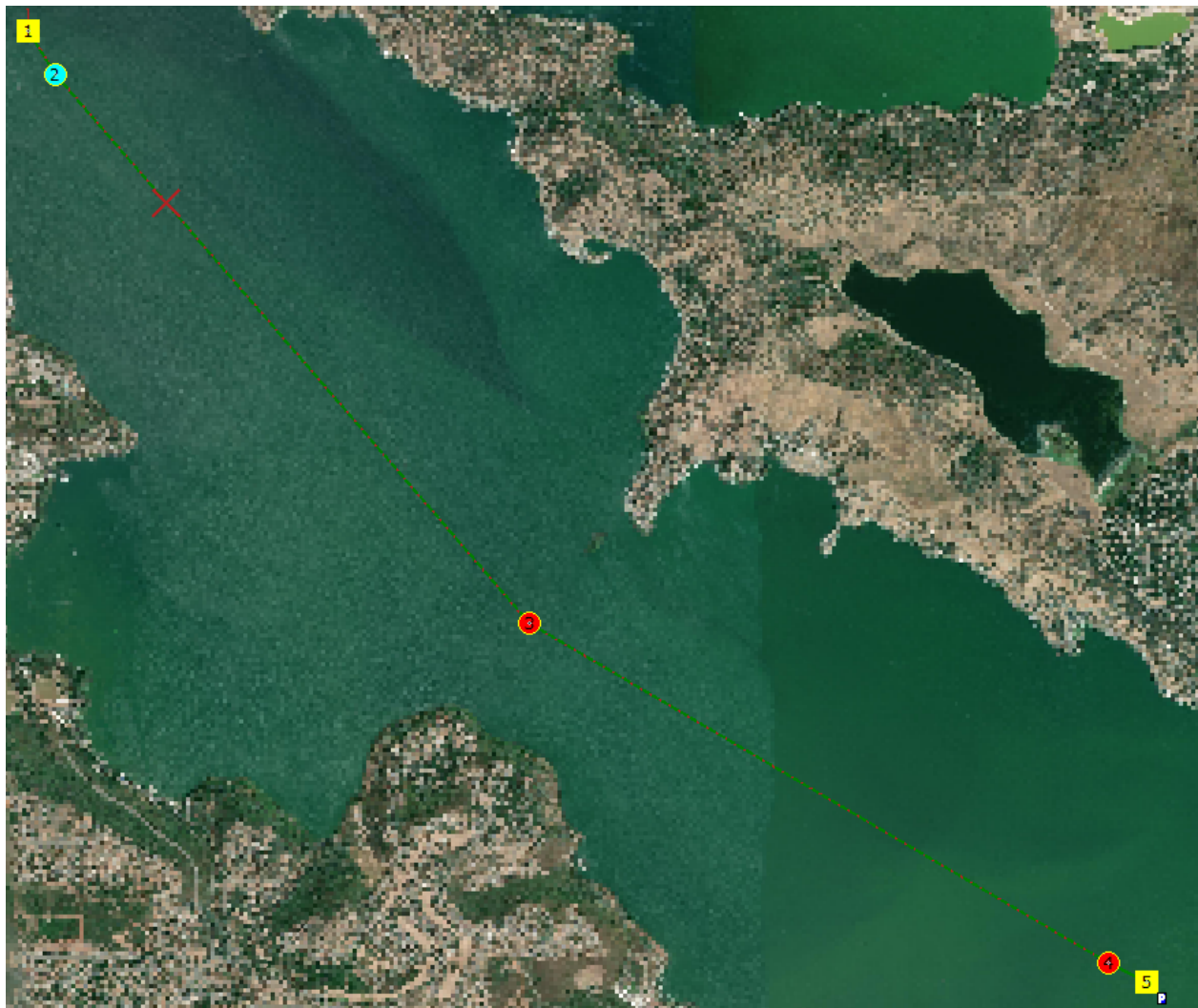
Lower Arm

Total distance for actual start to end: 8.9 km

Distance from dive to surface: 8.45 km

Start Point (first dive): 39.03107, -122.73967

End Point (end surface): 38.95404, -122.66682



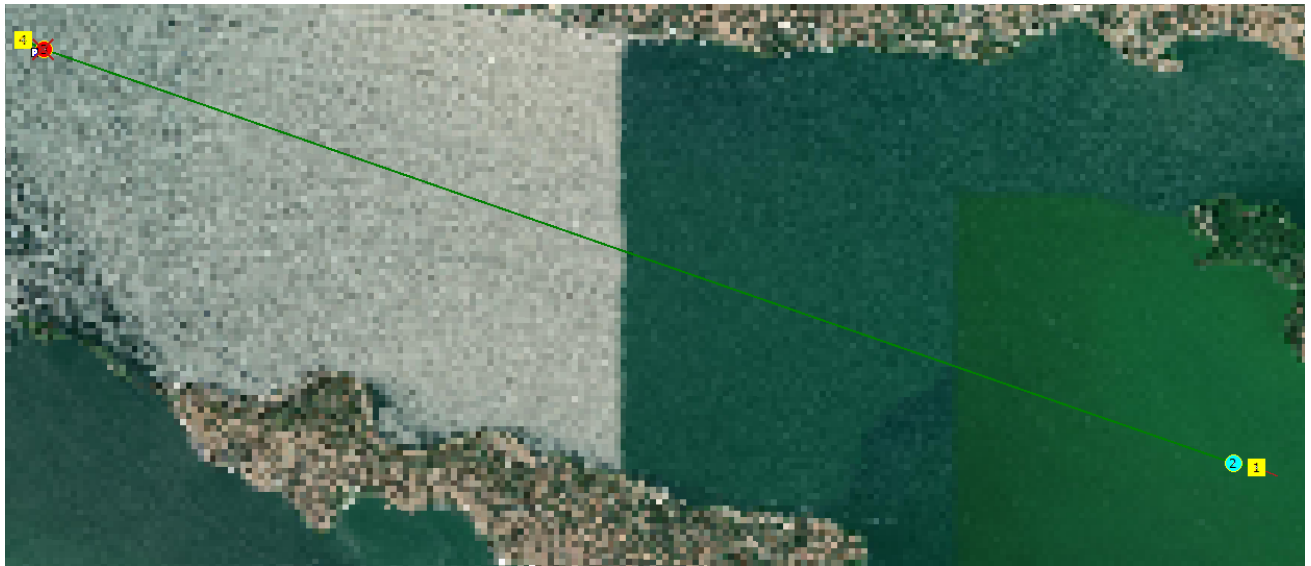
Oaks Arm

Total distance for actual start to end: 5.3 km

Distance from dive to surface: 5.1 km

Start Point (first dive): 39.00529, -122.68130

End Point (end surface): 39.02013, -122.73651



Konacti Bay

Total distance for actual start to end: 6.9 km

Distance from dive to surface: 6.65 km

Start Point (first dive): 38.97023, -122.73052

End Point (end surface): 38.96791, -122.72626

